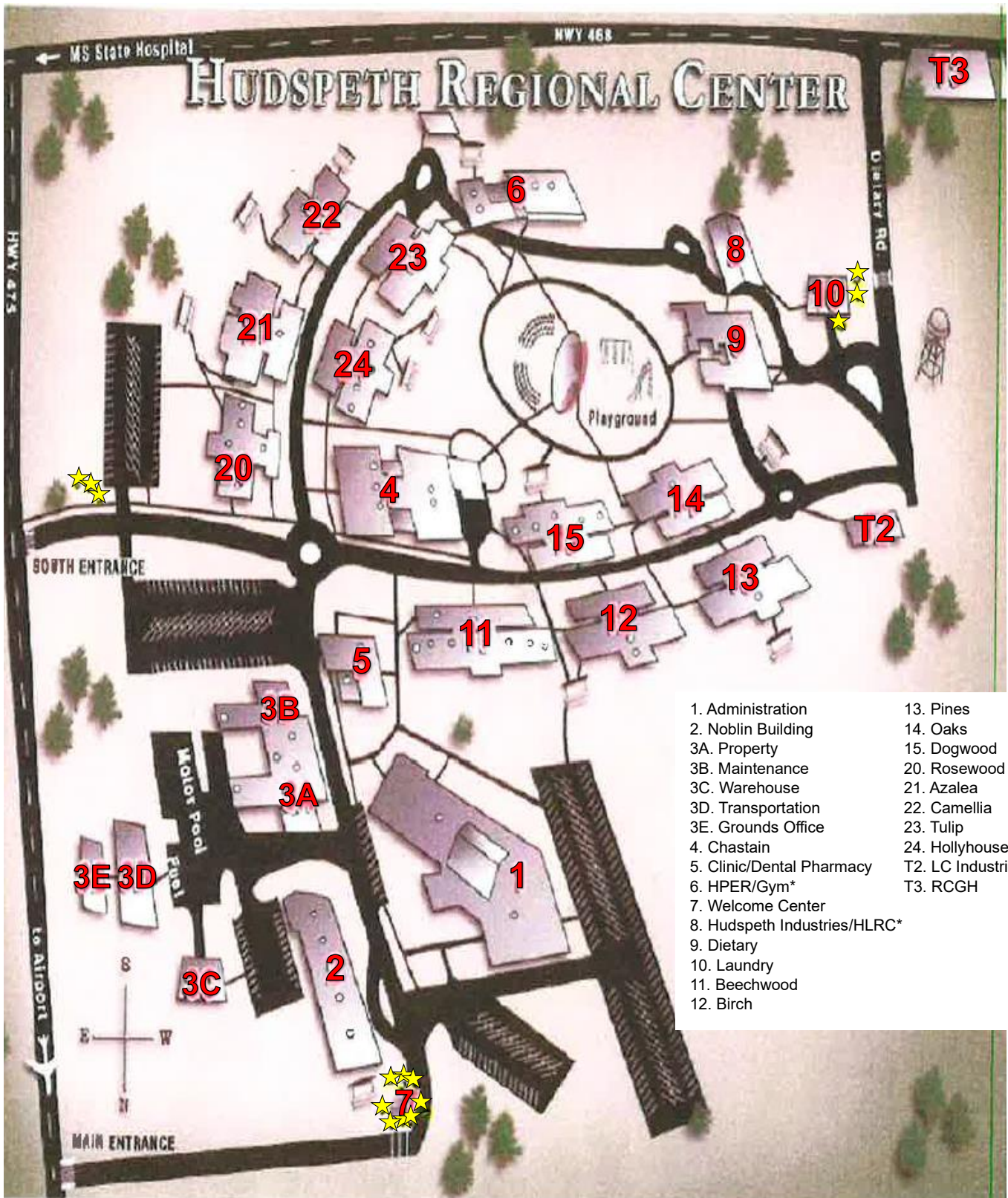


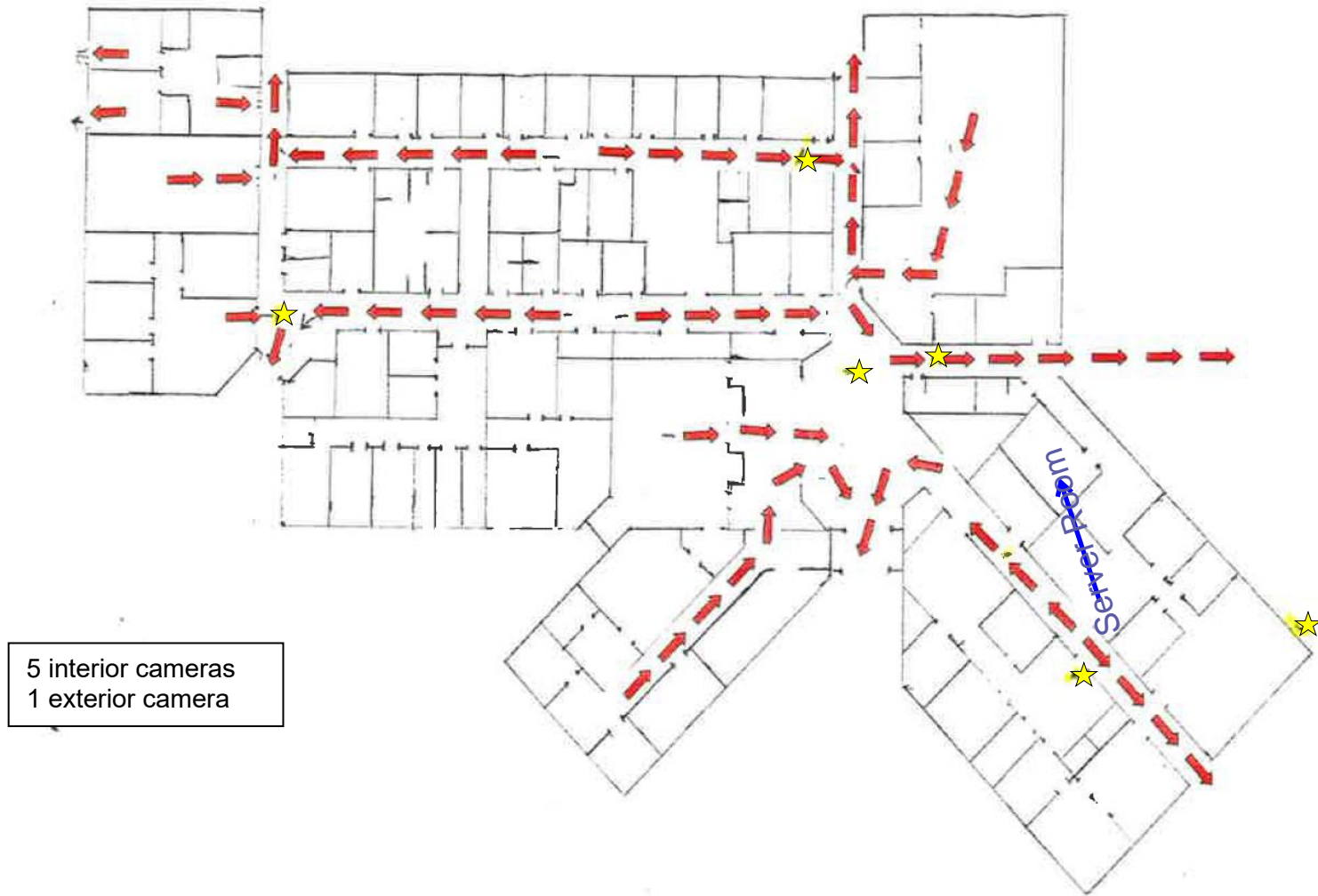
ATTACHMENT B – HUDSPETH CCTV DRAWINGS



*Gym and HLRC has specific camera count requirements (see Exhibit C), but the locations are undetermined. Maps for these buildings are not provided.

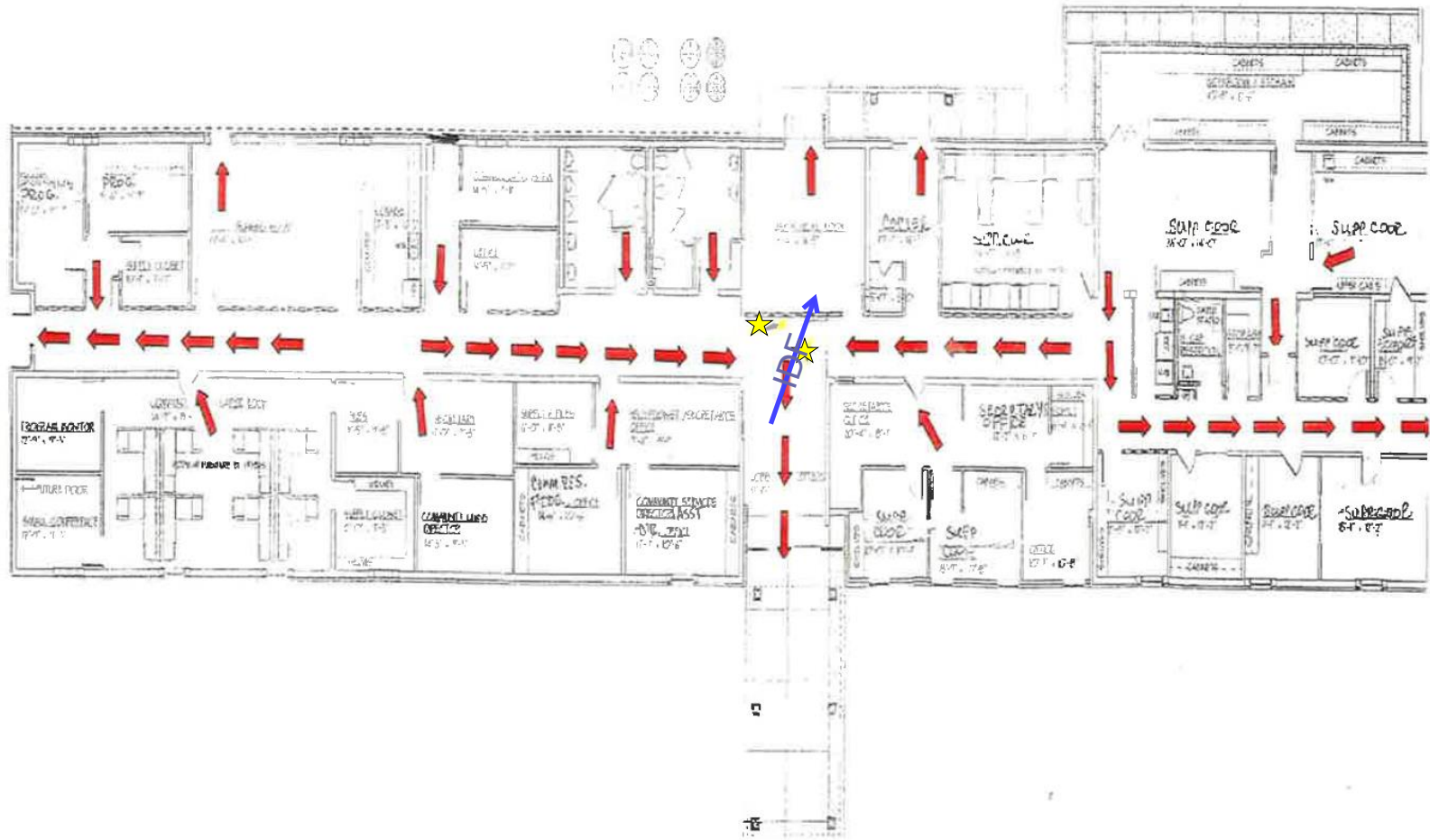
ATTACHMENT B – HUDSPETH CCTV DRAWINGS

Administration



5 interior cameras
1 exterior camera

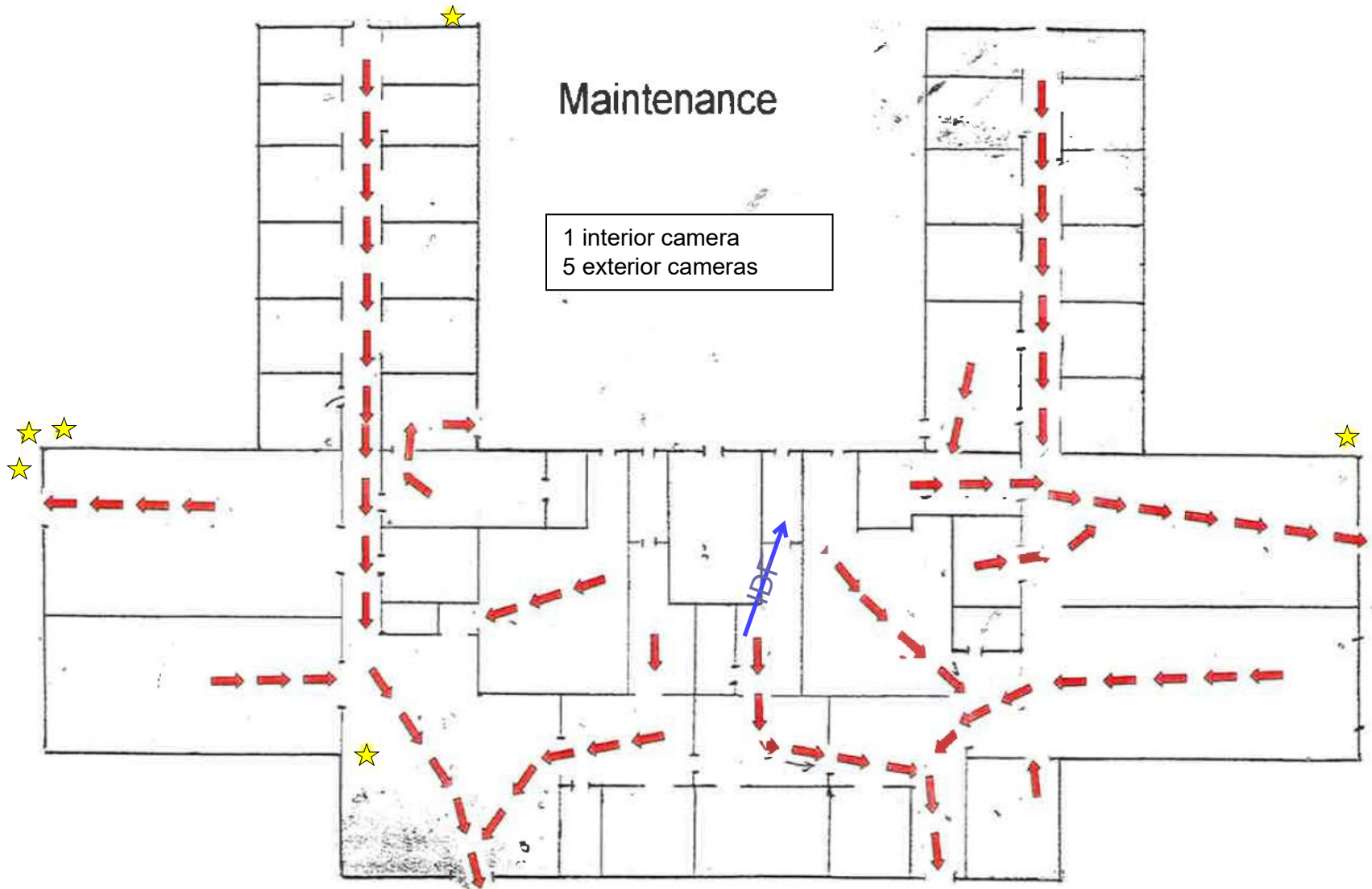
ATTACHMENT B – HUDSPETH CCTV DRAWINGS



2 interior cameras

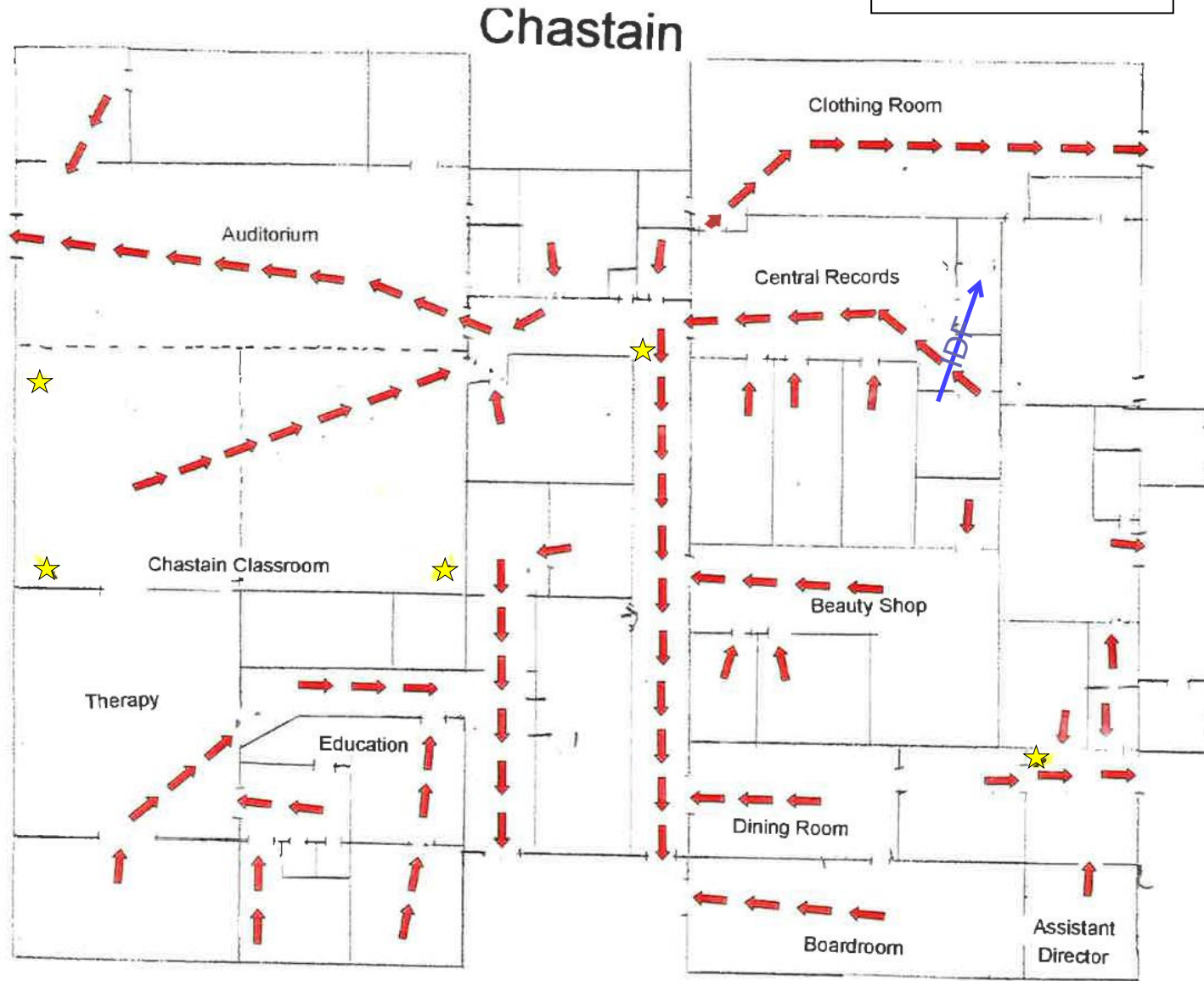
Noblin Building

ATTACHMENT B – HUDSPETH CCTV DRAWINGS

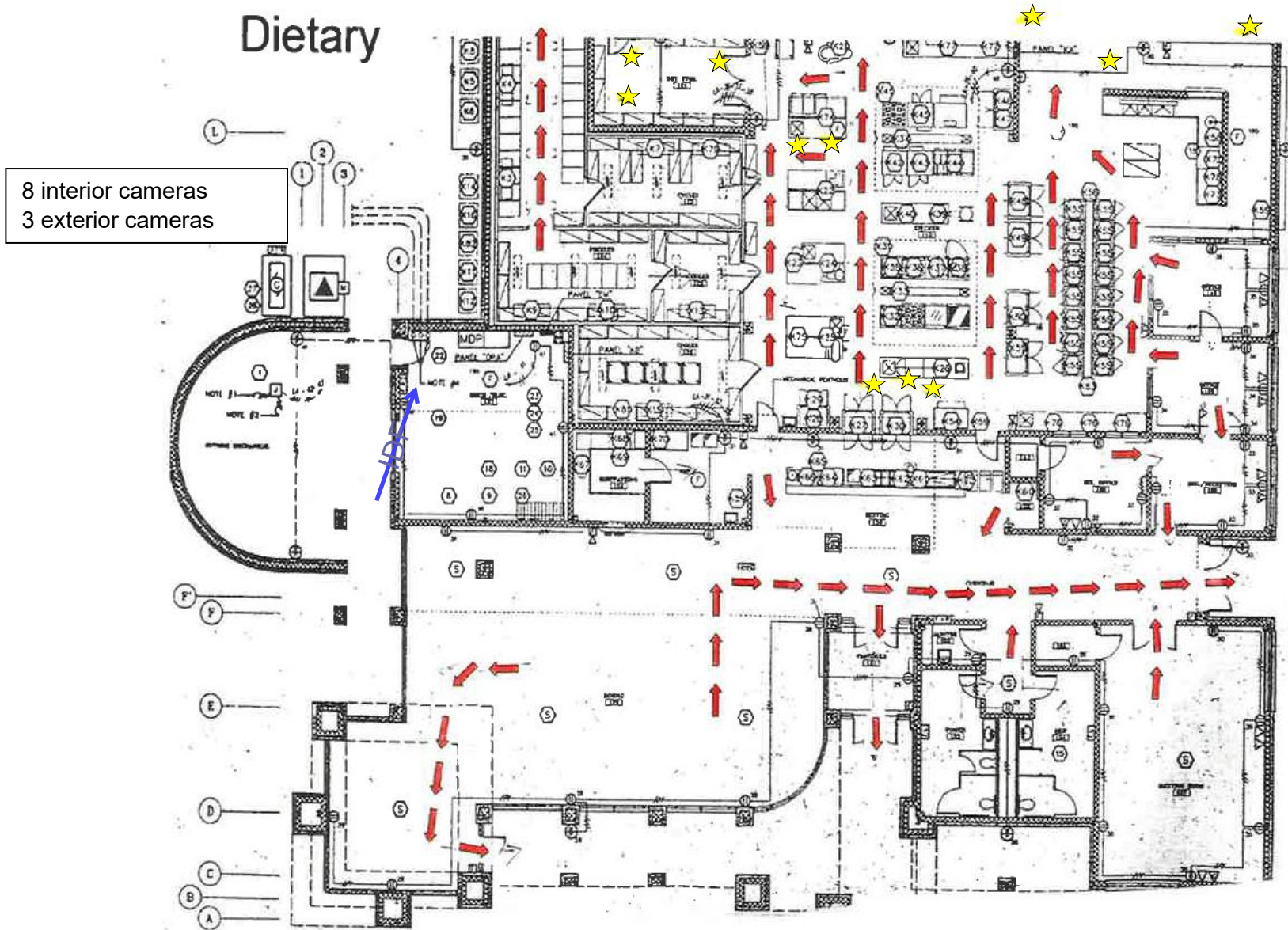


ATTACHMENT B – HUDSPETH CCTV DRAWINGS

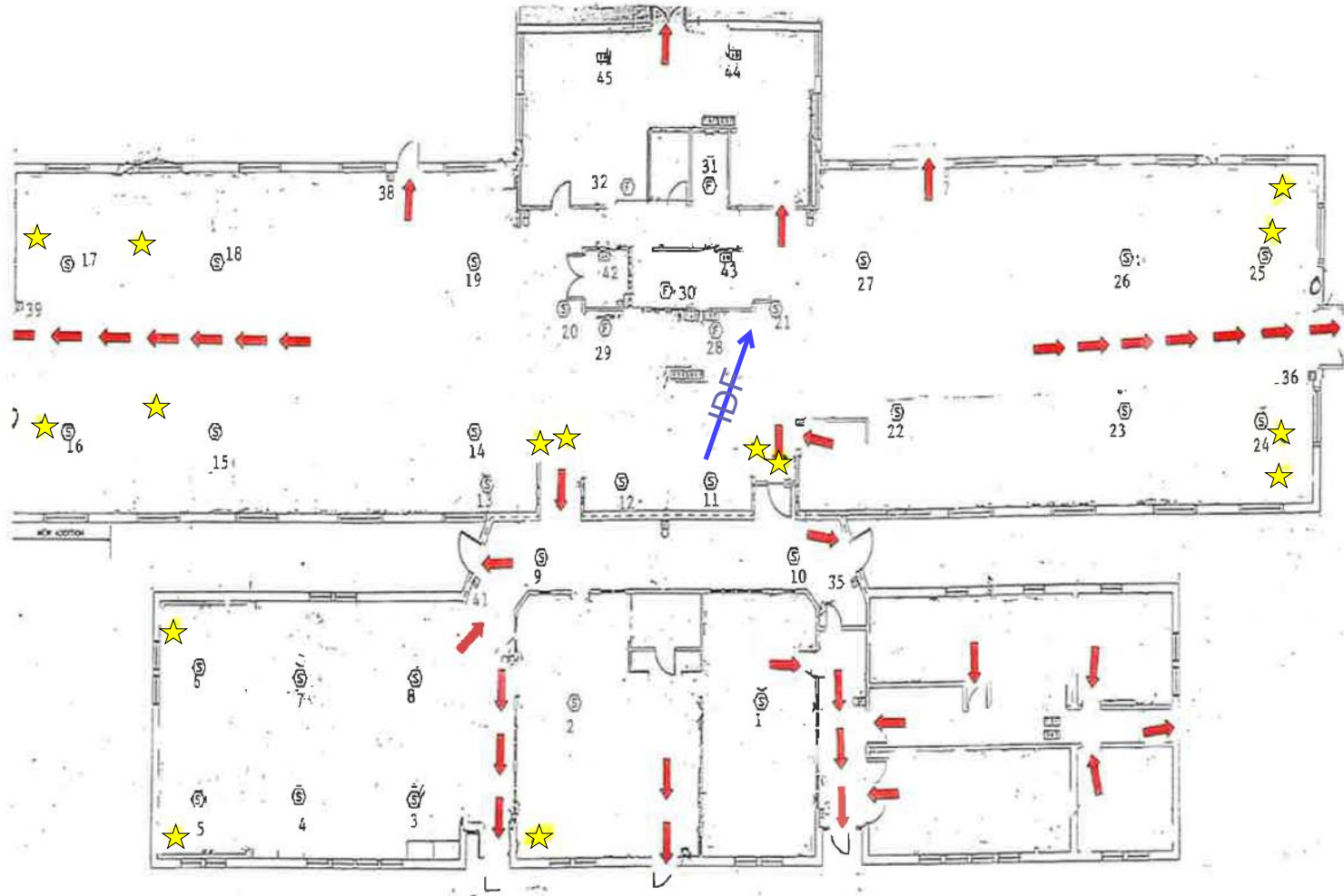
5 interior cameras



ATTACHMENT B – HUDSPETH CCTV DRAWINGS



ATTACHMENT B – HUDSPETH CCTV DRAWINGS

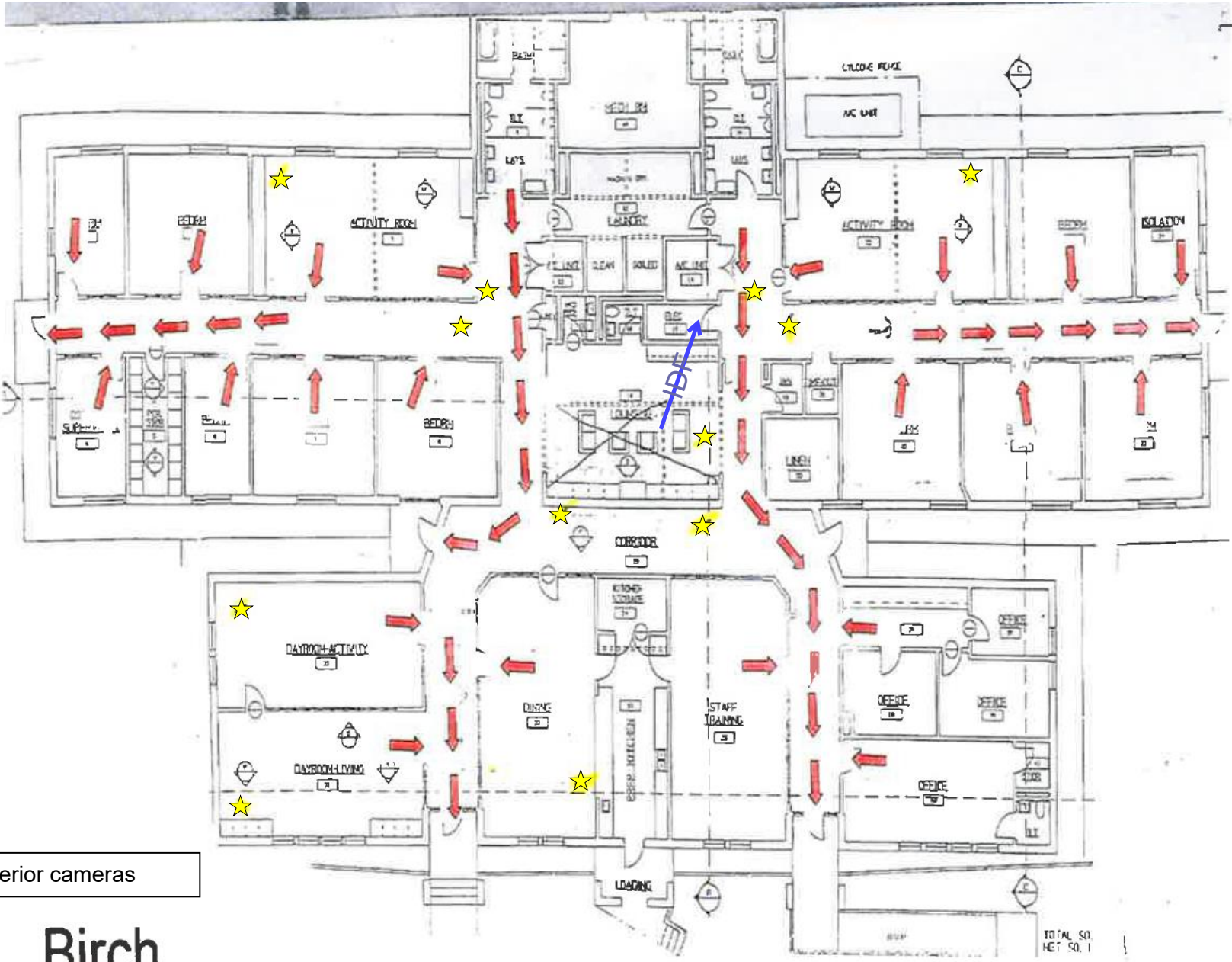


FIRE ALARM NUMBER CHART - BEECHWOOD COFFAGE	
NUMBER	DESCRIPTION
1 - 27	SMOKE DETECTOR
28 - 32	THERMAL DETECTOR
33 - 41	FULL STATION
42 - 45	SMOKE DAMPER

Beechwood

15 interior cameras

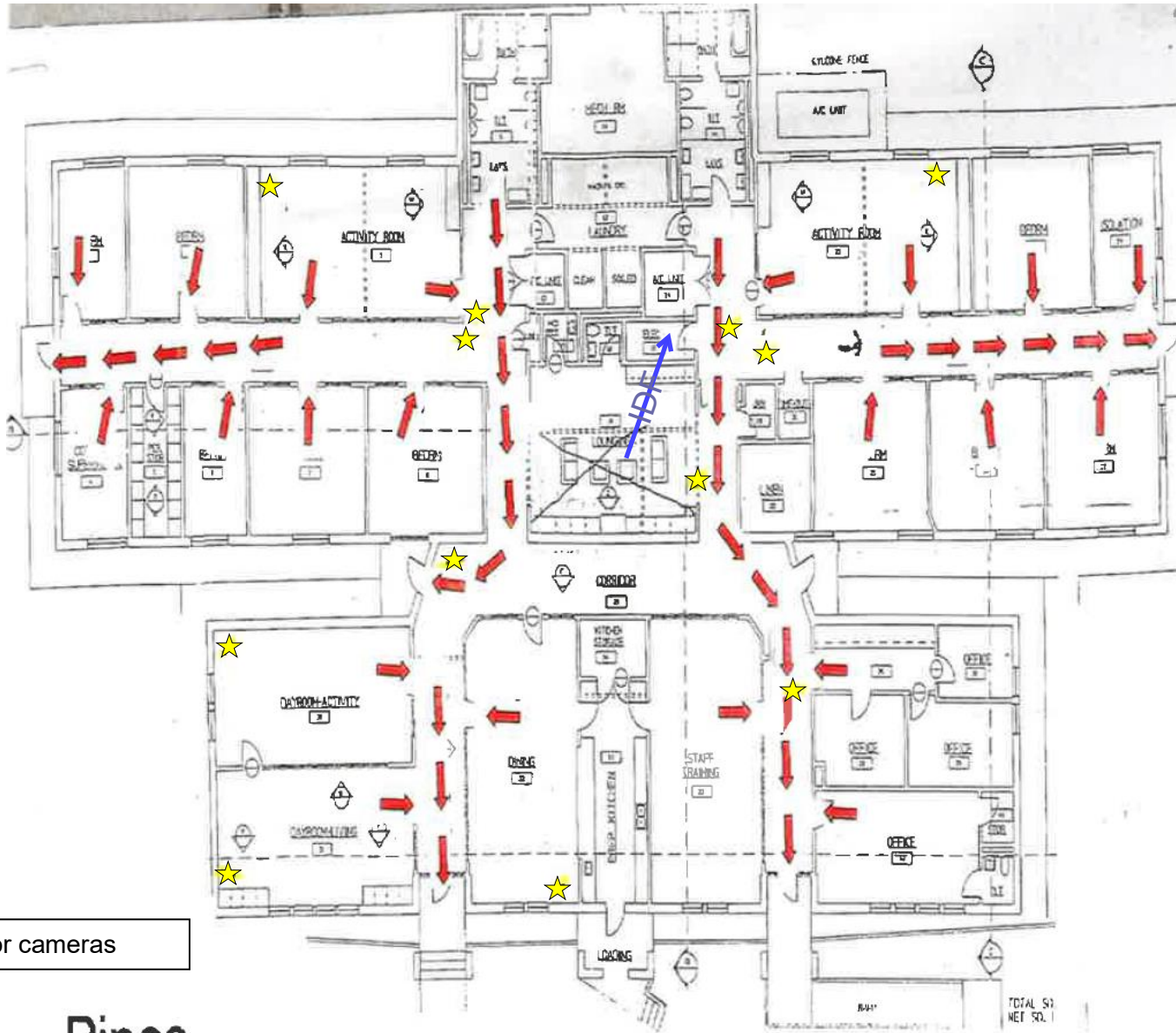
ATTACHMENT B – HUDSPETH CCTV DRAWINGS



12 interior cameras

Birch

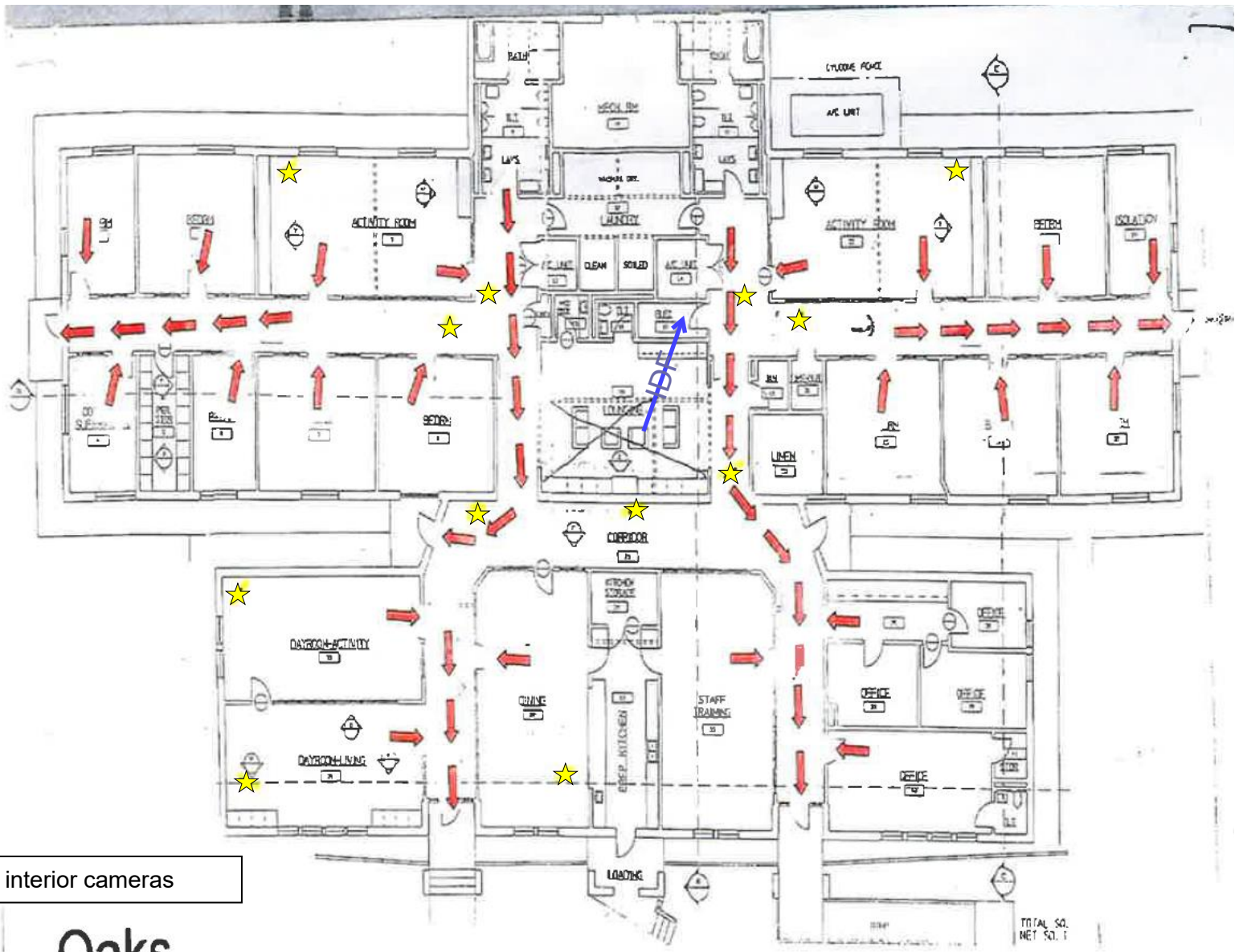
ATTACHMENT B – HUDSPETH CCTV DRAWINGS



12 interior cameras

Pines

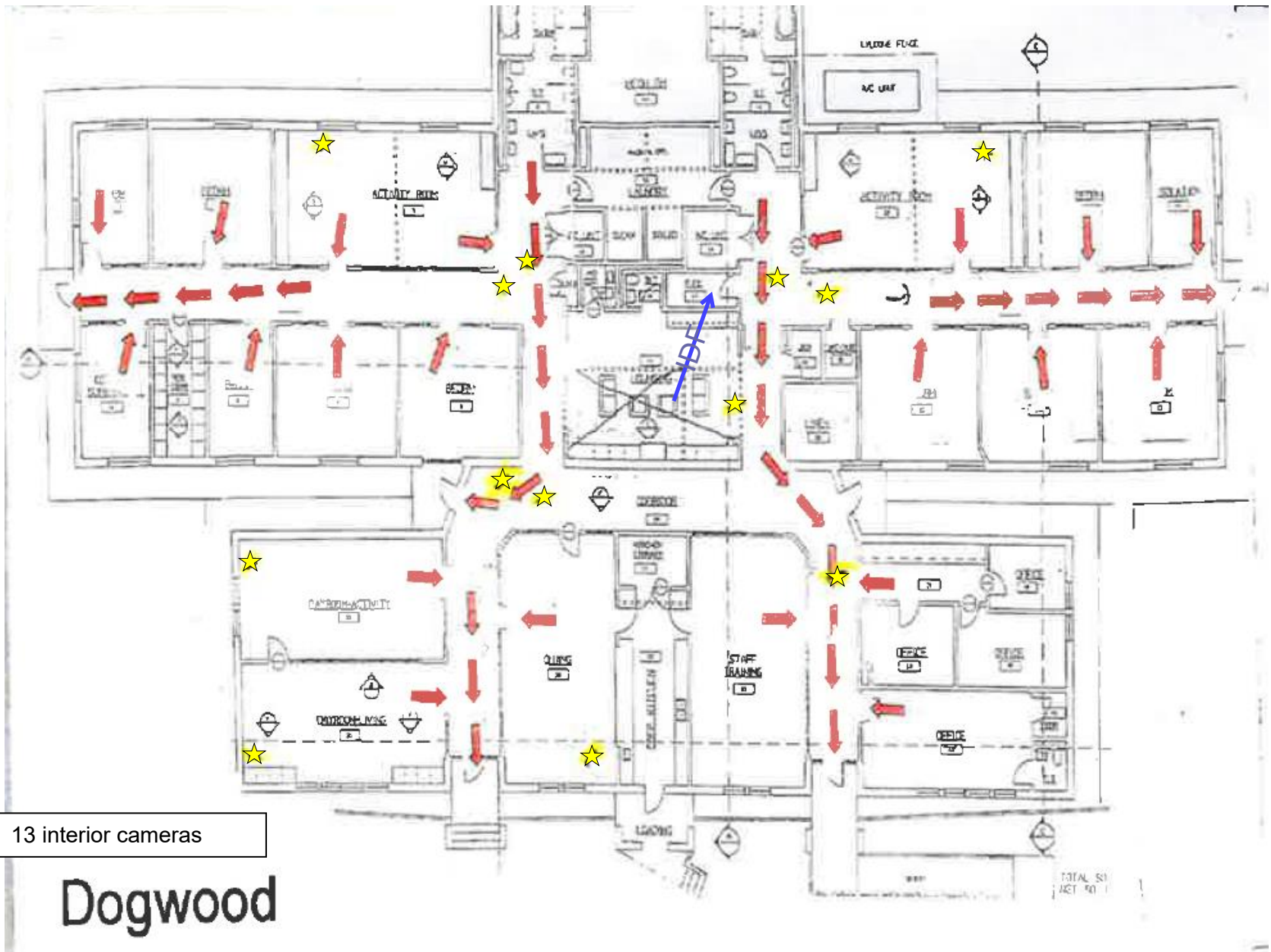
ATTACHMENT B – HUDSPETH CCTV DRAWINGS



12 interior cameras

Oaks

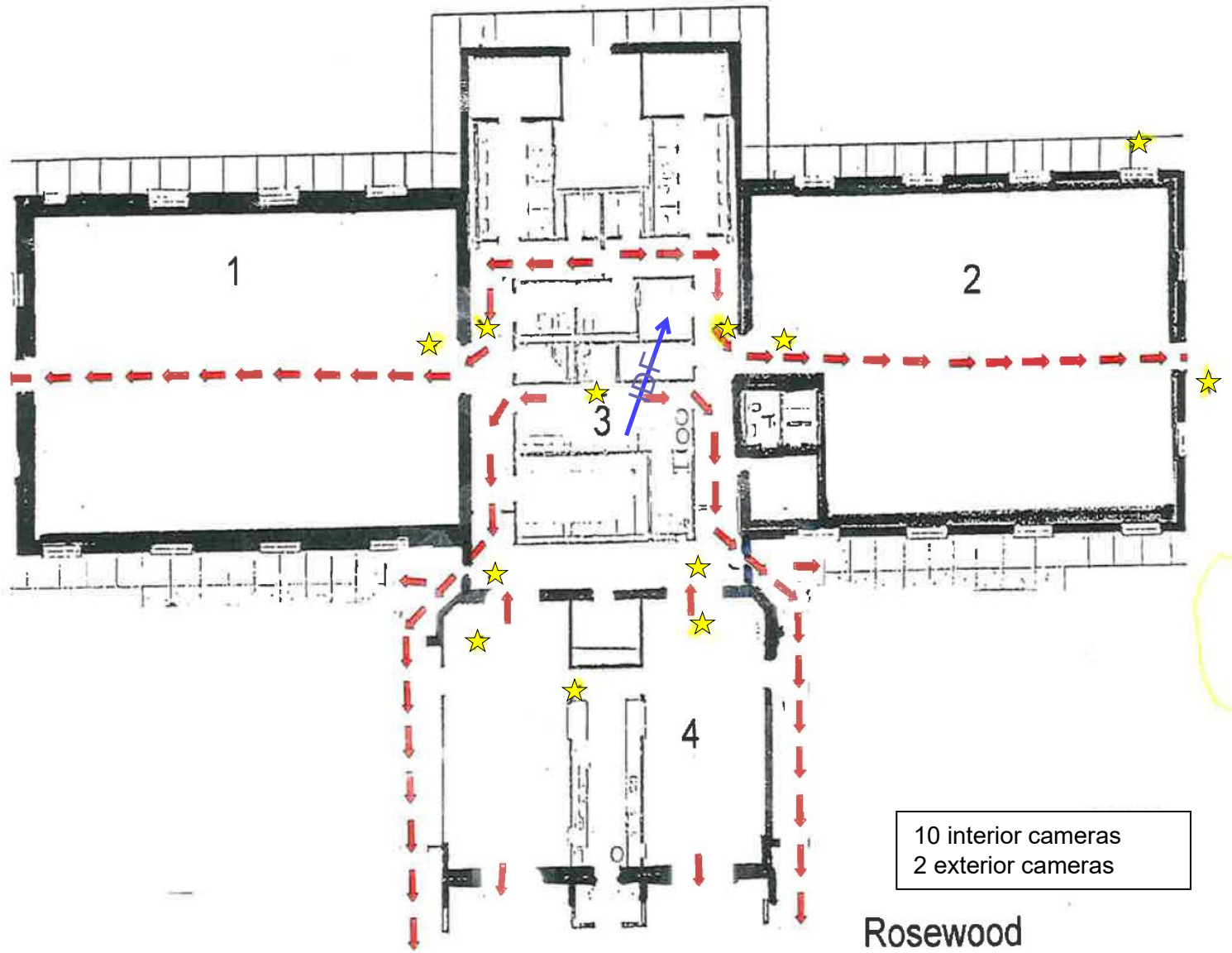
ATTACHMENT B – HUDSPETH CCTV DRAWINGS



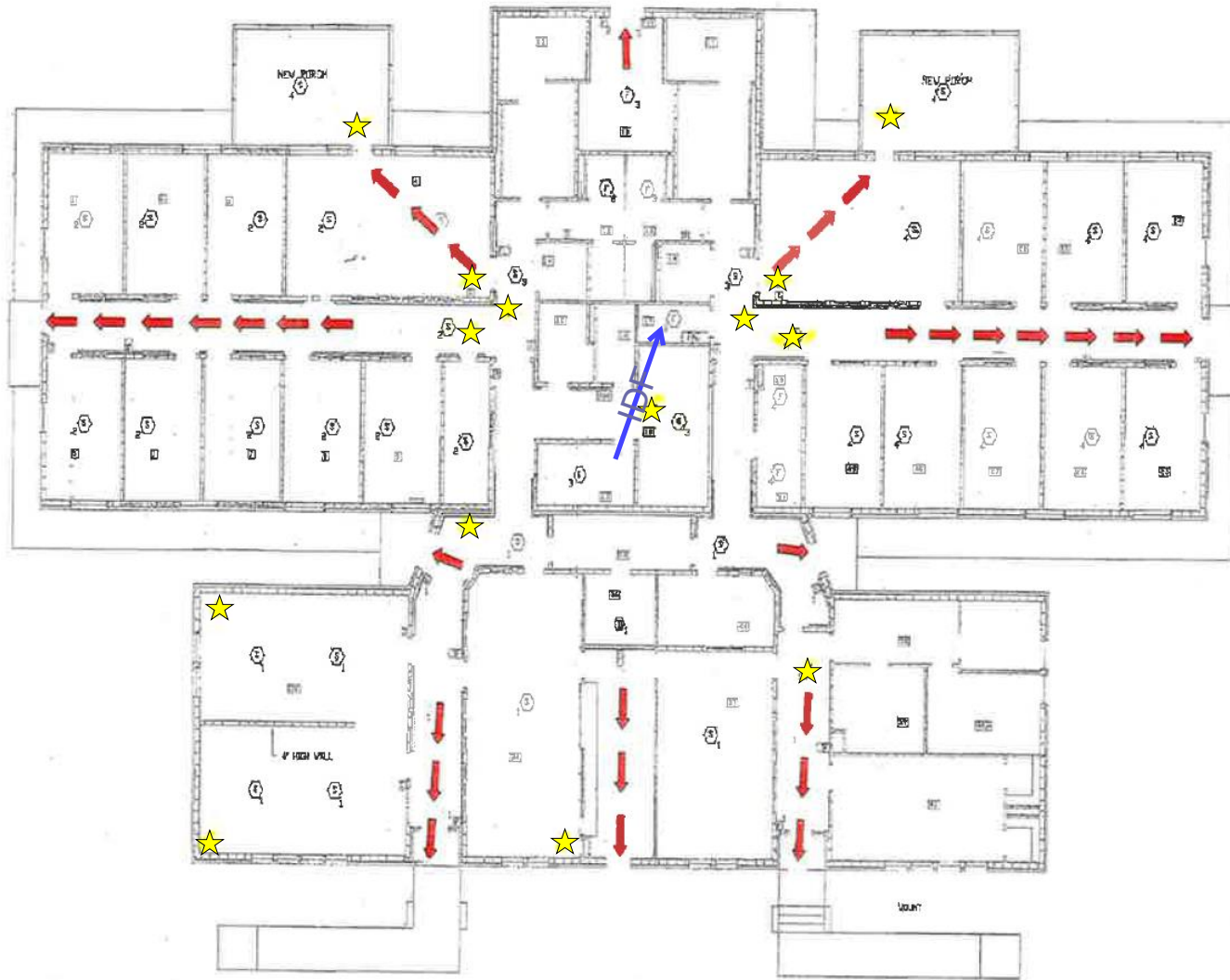
13 interior cameras

Dogwood

ATTACHMENT B – HUDSPETH CCTV DRAWINGS



ATTACHMENT B – HUDSPETH CCTV DRAWINGS

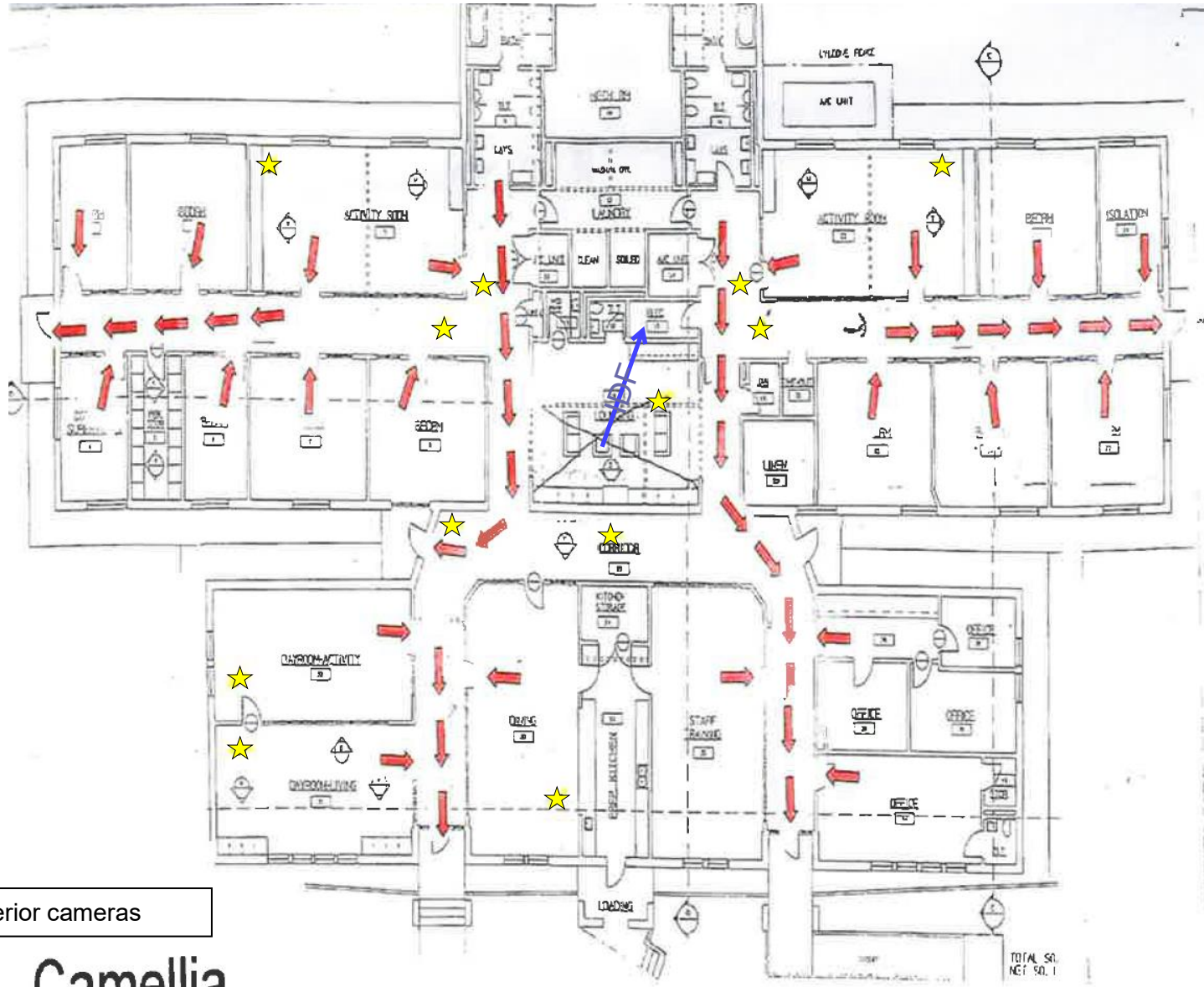


FLOOR PLAN: PART 'A'
FIRE ALARM SYSTEM

14 interior cameras

Azalea

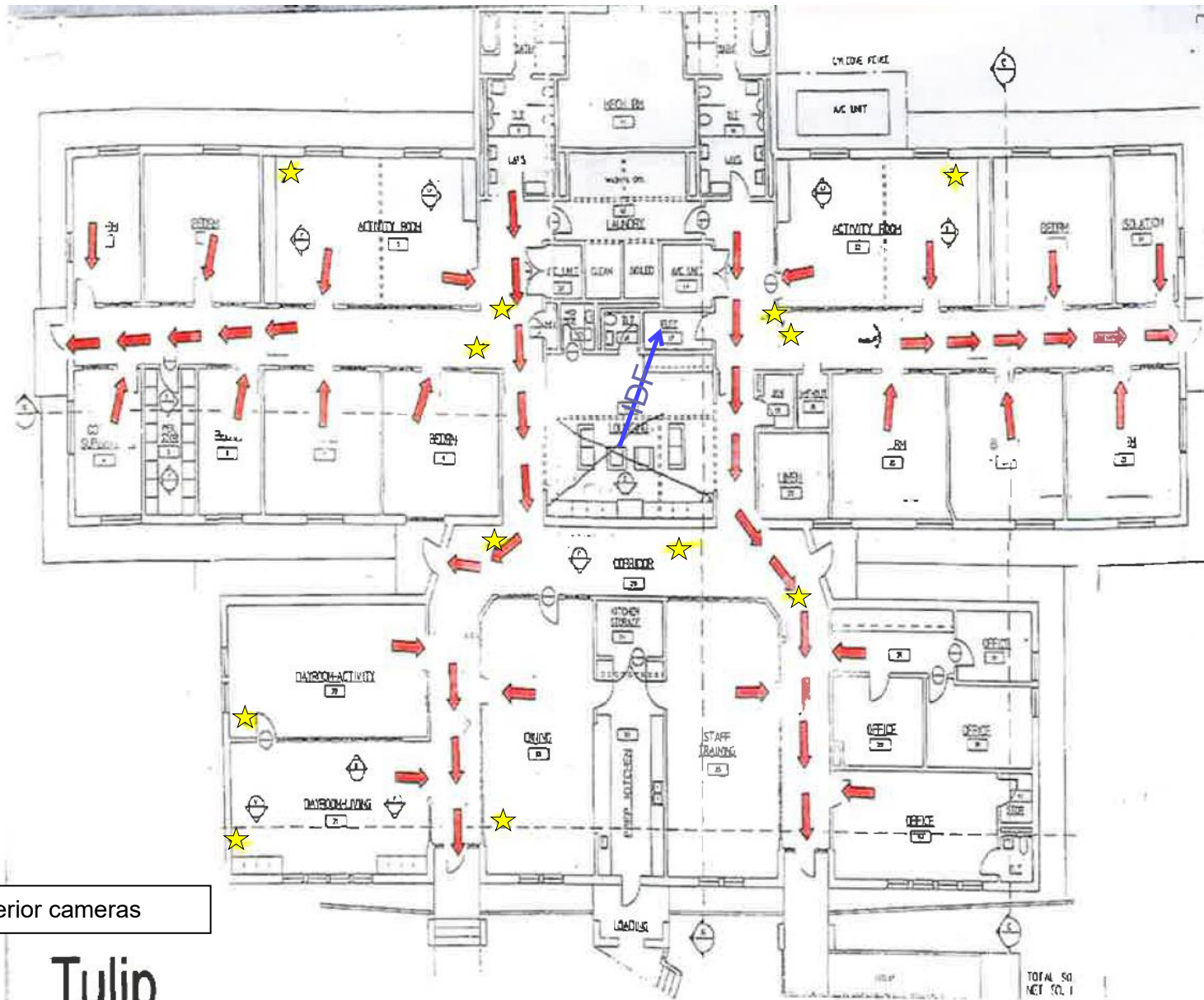
ATTACHMENT B – HUDSPETH CCTV DRAWINGS



12 interior cameras

Camellia

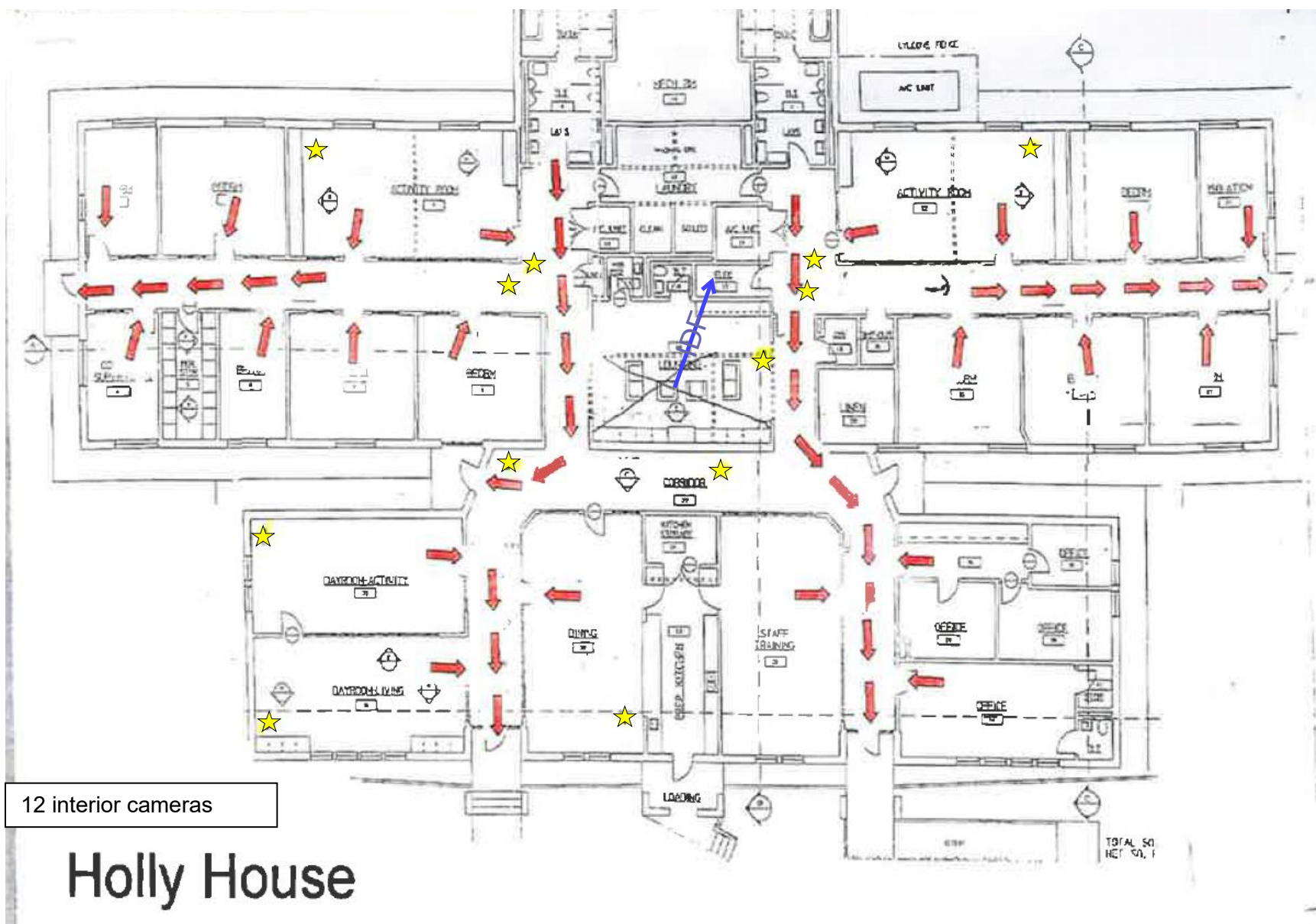
ATTACHMENT B – HUDSPETH CCTV DRAWINGS



12 interior cameras

Tulip

ATTACHMENT B – HUDSPETH CCTV DRAWINGS



12 interior cameras

Holly House